

Stormwater Infrastructure Map

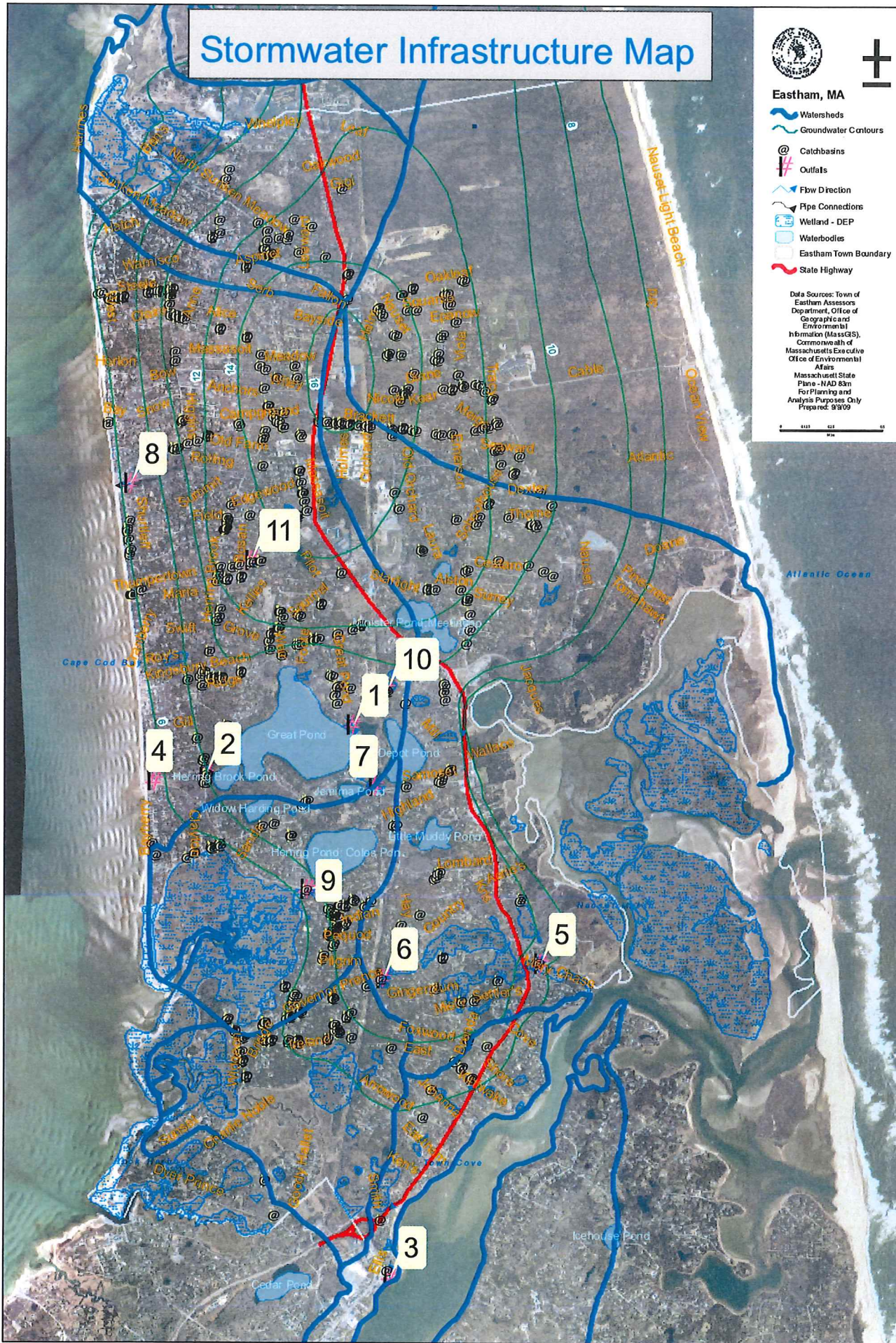


Eastham, MA

- Watersheds
- Groundwater Contours
- Catchbasins
- Outfalls
- Flow Direction
- Pipe Connections
- Welland - DEP
- Waterbodies
- Eastham Town Boundary
- State Highway

Data Sources: Town of Eastham Assessors Department, Office of Geographic and Environmental Information (MassGIS), Commonwealth of Massachusetts Executive Office of Environmental Affairs
Massachusetts State Plane - NAD 83m
For Planning and Analysis Purposes Only
Prepared: 9/9/09

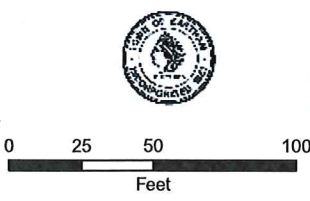
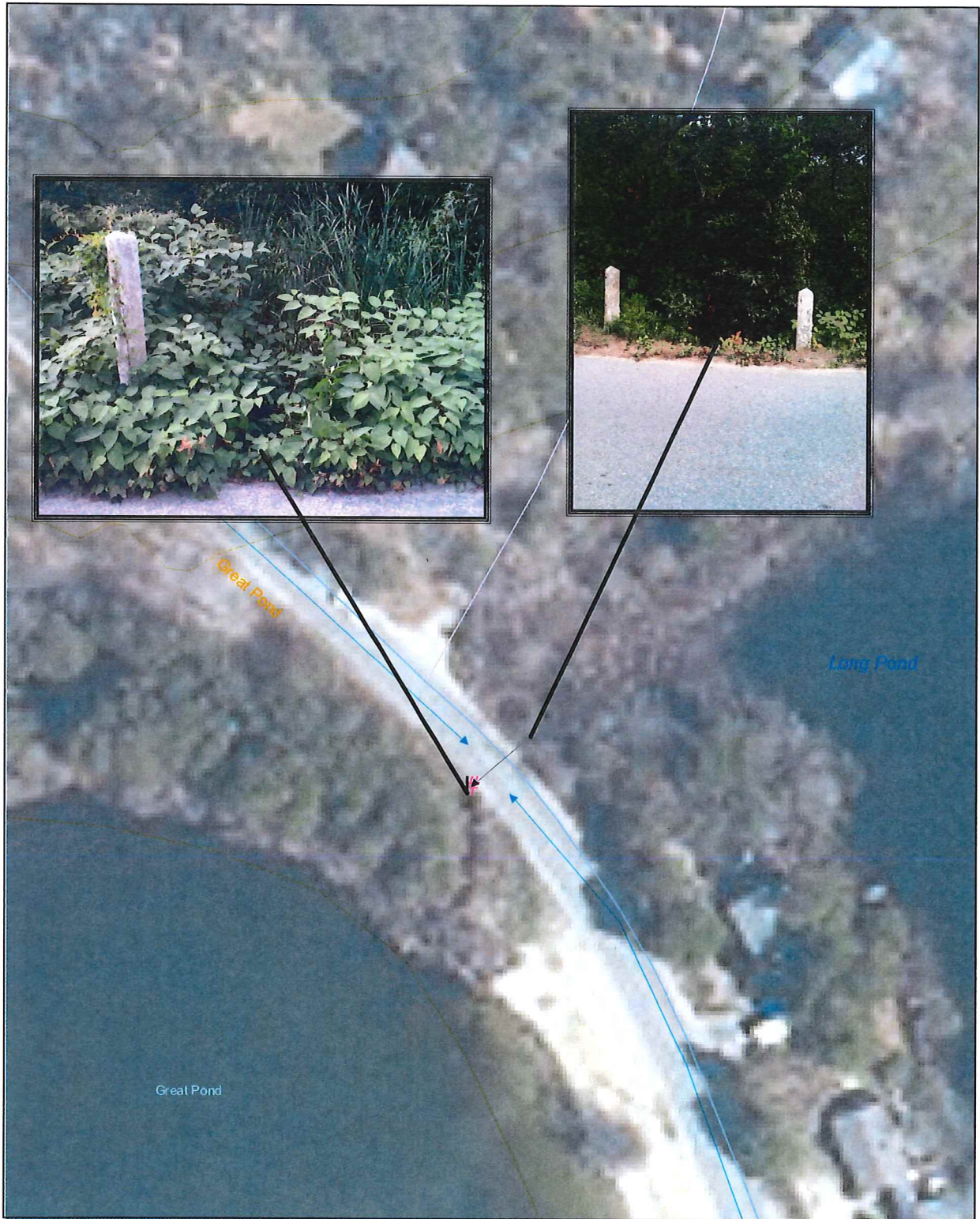
Scale: 0 100 200 Feet



Stormwater Infrastructure Map

Outfall Name: Great Pond
 Number: 1
 Location: Great Pond Road / Great Pond

Description / Planned Roadway Maintenance:
 The roadway is swept routinely. The swale is at the location of a former herring run to Long Pond. A restoration grant has been submitted to the MA Division of Marine Fisheries.



- | | | |
|----------|------------------|-----------------------|
| Closed | Hot Mix | Catchbasins |
| Dirt | Mixed in Place | Flow Direction |
| Driveway | Paper | Outfalls |
| Stone | Contours 1:5,000 | Pipe Connections |
| | | Waterbodies |
| | | Eastham Town Boundary |
| | | State Highway |

Data Sources: Town of Eastham Assessors
 Department, Office of Geographic and
 Environmental Information (MassGIS),
 Commonwealth of Massachusetts Executive
 Office of Environmental Affairs
 Massachusetts State Plane - NAD 83m
 For Planning and Analysis Purposes Only
 Prepared: 9/9/09



Stormwater Infrastructure Map

Outfall Name: Herring Run
 Number: 2
 Location Herringbrook Road / Bridge Pond

Description / Planned Roadway Maintenance:
 The outfall from this basin to the Herring Brook has been blocked by a gabion. During extreme tides water flows into the pond. The road is swept and the basins are cleaned routinely. Run has been funded by NRCS and the project is under design. This outfall will be eliminated.





0 25 50 100
Feet

Road Surface	Hot Mix	@ Catchbasins
Closed	Mixed in Place	Flow Direction
Dirt	Paper	Outfalls
Driveway	Stone	Pipe Connections
Contours 1:5,000		Waterbodies
		Eastham Town Boundary
		State Highway

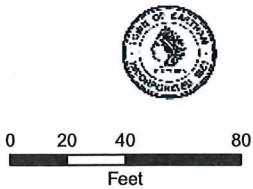
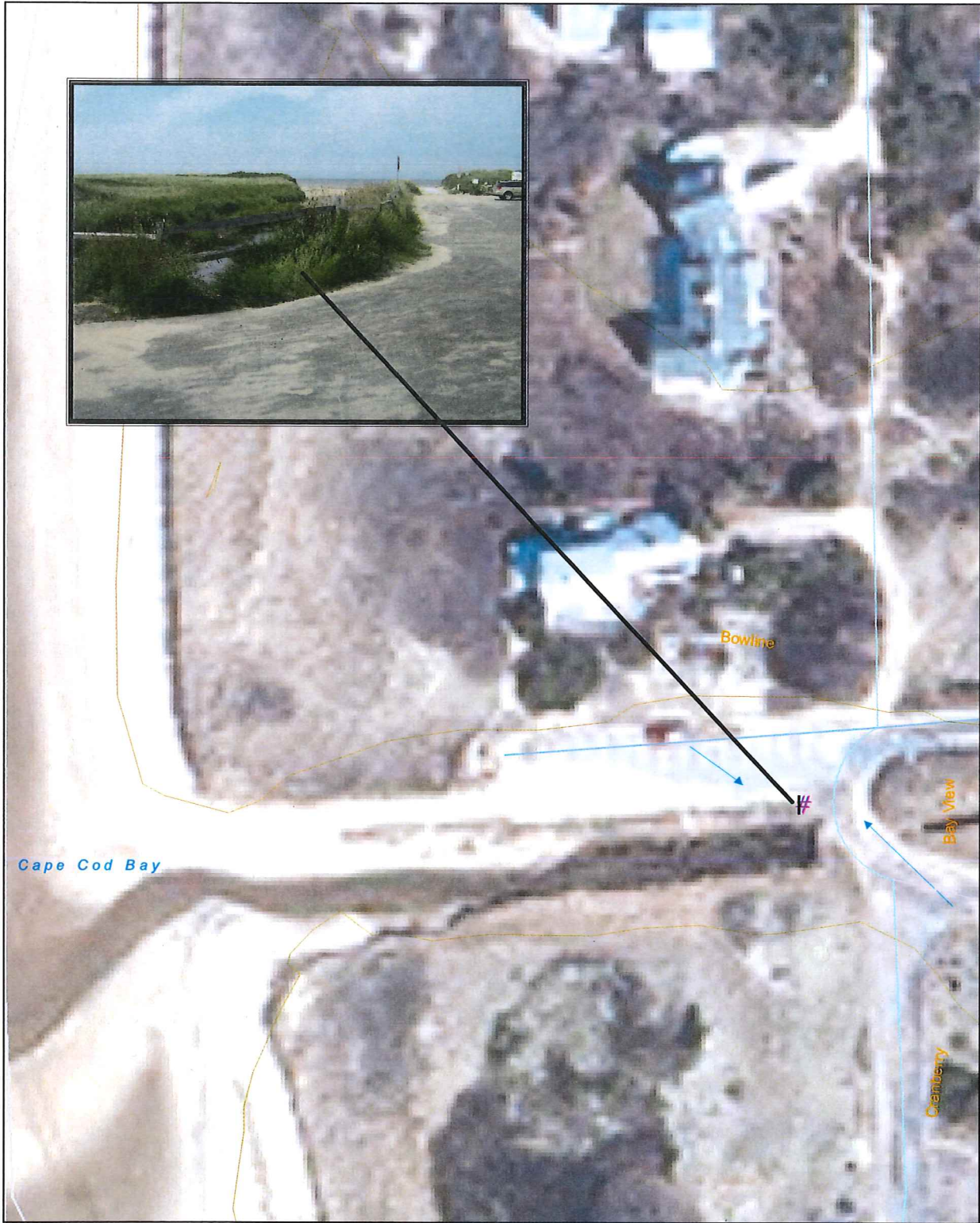
Data Sources: Town of Eastham Assessors
 Department, Office of Geographic and
 Environmental Information (MassGIS),
 Commonwealth of Massachusetts Executive
 Office of Environmental Affairs
 Massachusetts State Plane - NAD 83m
 For Planning and Analysis Purposes Only
 Prepared: 9/9/09



Stormwater Infrastructure Map

Outfall Name: Cole Road
 Number: 4
 Location Cole Road / Cape Cod Bay

Description / Planned Roadway Maintenance:
 This parking lot drains into the Herring Brook. The DPW picks up trash at the lot daily and visually inspects the outfall.



- | | | |
|----------|------------------|-----------------------|
| Closed | Hot Mix | Catchbasins |
| Dirt | Mixed in Place | Flow Direction |
| Driveway | Paper | Outfalls |
| | Stone | Pipe Connections |
| | Contours 1:5,000 | Waterbodies |
| | | Eastham Town Boundary |
| | | State Highway |

Data Sources: Town of Eastham Assessors
 Department, Office of Geographic and
 Environmental Information (MassGIS),
 Commonwealth of Massachusetts Executive
 Office of Environmental Affairs
 Massachusetts State Plane - NAD 83 m
 For Planning and Analysis Purposes Only
 Prepared: 9/9/09




Stormwater Infrastructure Map

Outfall Name: Gov. Prence Ext.
 Number: 5
 Location Gov. Prence Ext. / Nauset Marsh

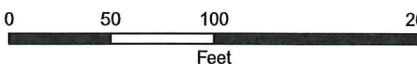
Description / Planned Roadway Maintenance:
 A single catchbasin connect to the creek channel through a 6-foot long pipe (visually checked for illegal connections - none identified). The road is bordered on both sides by salt marsh and National Parkland (Cape cod National Seashore). The road is swept and the basin cleaned routinely.






<p>Road Surface</p> <ul style="list-style-type: none"> Closed Dirt Driveway 	<ul style="list-style-type: none"> Hot Mix Mixed in Place Paper Stone Contours 1:5,000 	<ul style="list-style-type: none"> Catchbasins Flow Direction Outfalls Pipe Connections Waterbodies Eastham Town Boundary State Highway
--	--	---

Data Sources: Town of Eastham Assessors
 Department, Office of Geographic and
 Environmental Information (MassGIS),
 Commonwealth of Massachusetts Executive
 Office of Environmental Affairs
 Massachusetts State Plane - NAD 83m
 For Planning and Analysis Purposes Only
 Prepared: 9/9/09

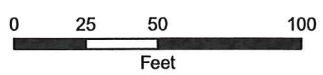




Stormwater Infrastructure Map

Outfall Name: Governor Prence Road
 Number: 6
 Location: Governor Prence Road / Cranberry Bog

Description / Planned Roadway Maintenance:
 This basin drains to a cranberry bog or to a stream connected to Nauset Marsh when the gates are switched. The farmer has a tail water pond connected to the catch basin via a 4" pipe. The road is swept and the basin cleaned routinely.



- | | | |
|---------------------|----------------|-----------------------|
| Road Surface | Hot Mix | @ Catchbasins |
| Closed | Mixed in Place | Flow Direction |
| Dirt | Paper | Outfalls |
| Driveway | Stone | Pipe Connections |
| Contours 1:5,000 | | Waterbodies |
| | | Eastham Town Boundary |
| | | State Highway |

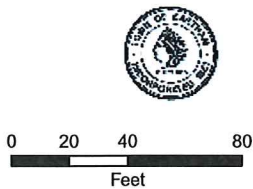
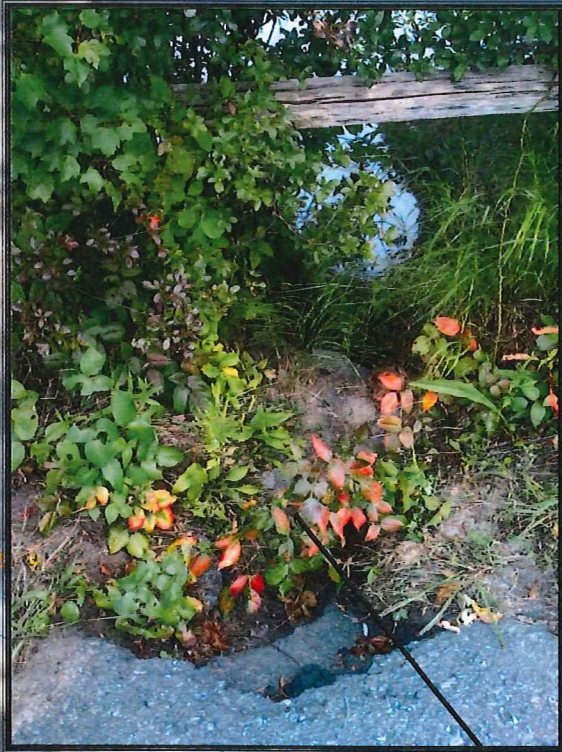
Data Sources: Town of Eastham Assessors
 Department, Office of Geographic and
 Environmental Information (MassGIS),
 Commonwealth of Massachusetts Executive
 Office of Environmental Affairs
 Massachusetts State Plane - NAD 83m
 For Planning and Analysis Purposes Only
 Prepared: 9/9/09



Stormwater Infrastructure Map

Outfall Name: Depot Pond
 Number: 7
 Location Samoset Road Road / Depot Pond

Description / Planned Roadway Maintenance:
 A short section of roadway drains to the pond via this swale. The road is swept and monitored routinely.



- | | | |
|------------------|----------------|-----------------------|
| Road Surface | Hot Mix | Catchbasins |
| Closed | Mixed in Place | Flow Direction |
| Dirt | Paper | Outfalls |
| Driveway | Stone | Pipe Connections |
| Contours 1:5,000 | | Waterbodies |
| | | Eastham Town Boundary |
| | | State Highway |

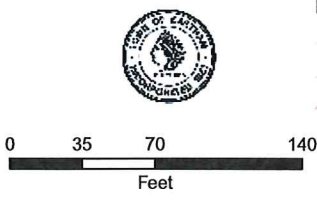
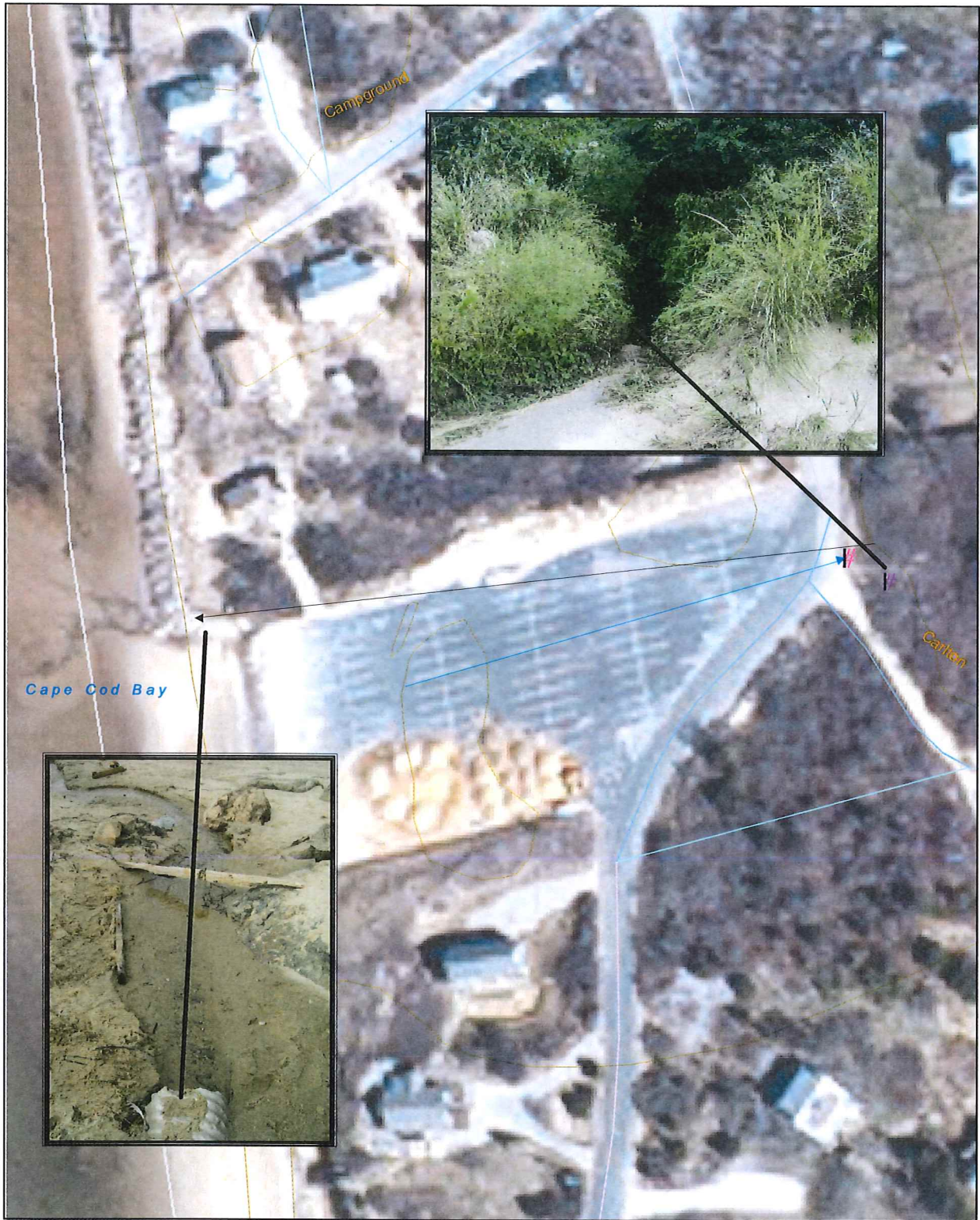
Data Sources: Town of Eastham Assessors
 Department, Office of Geographic and
 Environmental Information (MassGIS),
 Commonwealth of Massachusetts Executive
 Office of Environmental Affairs
 Massachusetts State Plane - NAD 83m
 For Planning and Analysis Purposes Only
 Prepared: 9/9/09



Stormwater Infrastructure Map

Outfall Name: Campground Beach
 Number: 8
 Location Campground Road / Cape Cod Bay

Description / Planned Roadway Maintenance:
 The beach parking lot drains to a small stream via a swale. Trash is picked up and the lot is inspected routinely.



- | | | |
|------------------|----------------|-----------------------|
| Road Surface | Hot Mix | Catchbasins |
| Closed | Mixed in Place | Flow Direction |
| Dirt | Paper | Outfalls |
| Driveway | Stone | Pipe Connections |
| Contours 1:5,000 | Waterbodies | Eastham Town Boundary |
| | State Highway | |

Data Sources: Town of Eastham Assessors
 Department, Office of Geographic and
 Environmental Information (MassGIS),
 Commonwealth of Massachusetts Executive
 Office of Environmental Affairs
 Massachusetts State Plane - NAD 83 m
 For Planning and Analysis Purposes Only
 Prepared: 9/9/09



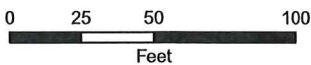
Stormwater Infrastructure Map

Outfall Name: Herring Pond
 Number: 9
 Location: Herringbrook Road / Herring River /
 Bridge Pond

Description / Planned Roadway Maintenance:
 The road drains to a "first-flush" stormwater system installed in 2006. The road is swept and the basin cleaned routinely. Staff has never seen water come out of the outfall.



Herring Pond; Coles Pon



- | | | |
|------------------|----------------|-----------------------|
| Road Surface | Hot Mix | Catchbasins |
| Closed | Mixed in Place | Flow Direction |
| Dirt | Paper | Outfalls |
| Driveway | Stone | Pipe Connections |
| Contours 1:5,000 | | Waterbodies |
| | | Eastham Town Boundary |
| | | State Highway |

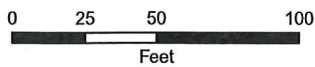
Data Sources: Town of Eastham Assessors
 Department, Office of Geographic and
 Environmental Information (MassGIS),
 Commonwealth of Massachusetts Executive
 Office of Environmental Affairs
 Massachusetts State Plane - NAD 83m
 For Planning and Analysis Purposes Only
 Prepared: 9/9/09



Stormwater Infrastructure Map

Outfall Name: Locust Road
 Number: 10
 Location Locust Road

Description / Planned Roadway Maintenance:
 This drop inlet drains to a heavily vegetated drainage easement via a 4' length of pipe. It is not connected to any water body. The road is swept and the basin cleaned routinely.



- | | | |
|------------------|----------------|-----------------------|
| Road Surface | Hot Mix | Catchbasins |
| Closed | Mixed in Place | Flow Direction |
| Dirt | Paper | Outfalls |
| Driveway | Stone | Pipe Connections |
| Contours 1:5,000 | Waterbodies | Eastham Town Boundary |
| | State Highway | |

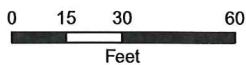
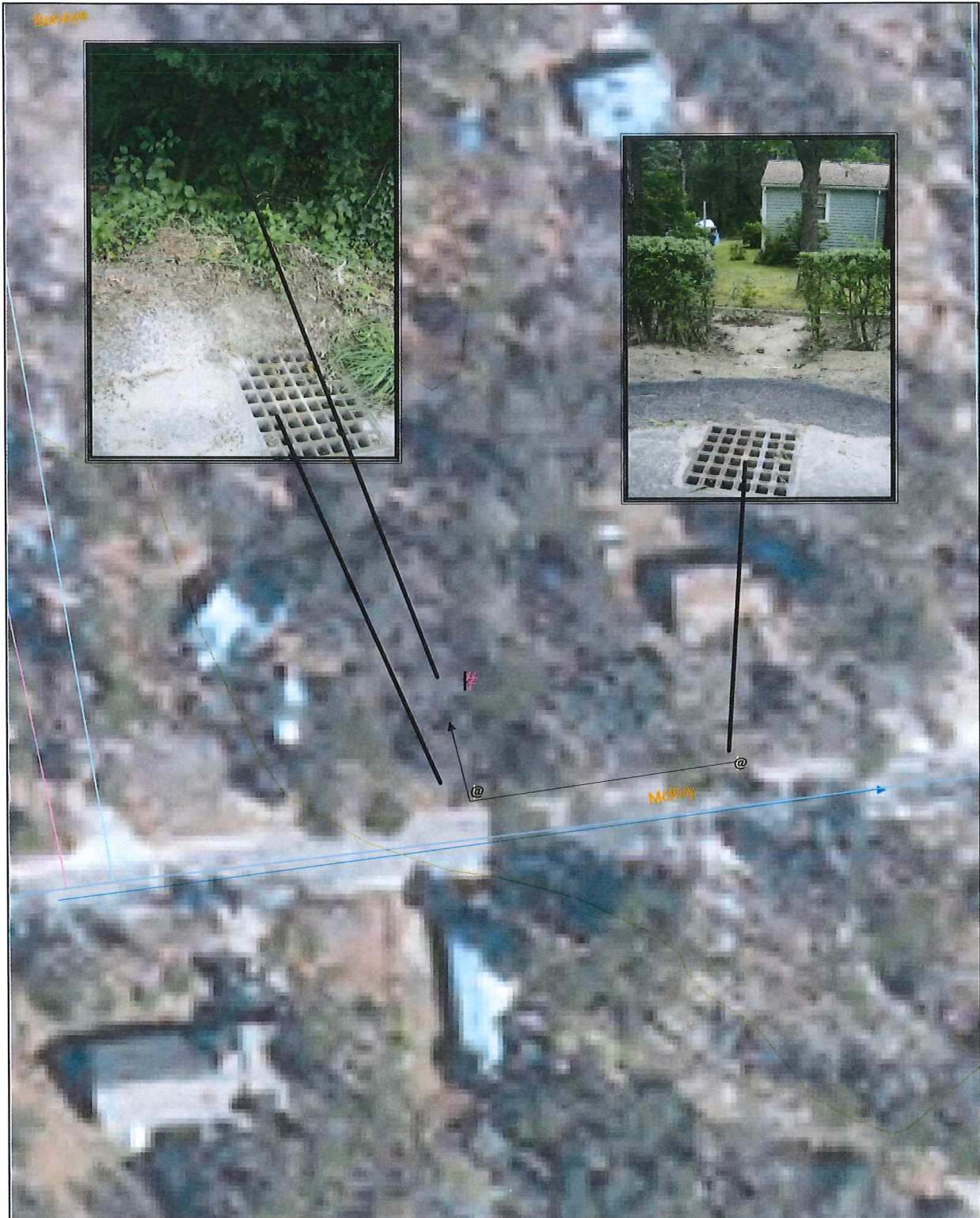
Data Sources: Town of Eastham Assessors
 Department, Office of Geographic and
 Environmental Information (MassGIS),
 Commonwealth of Massachusetts Executive
 Office of Environmental Affairs
 Massachusetts State Plane - NAD 83m
 For Planning and Analysis Purposes Only
 Prepared: 9/9/09



Stormwater Infrastructure Map

Outfall Name: McKoy Road
 Number: 11
 Location: McKoy Road

Description / Planned Roadway Maintenance:
 These catchbasins drain to an upland area drainage easement, not connected to any body of water. The road is swept and basins cleaned routinely.



- | | | | |
|---------------------|------------------|-----------------------|-------------|
| Road Surface | Hot Mix | @ | Catchbasins |
| Closed | Mixed in Place | Flow Direction | |
| Dirt | Paper | Outfalls | |
| Driveway | Stone | Pipe Connections | |
| | Contours 1:5,000 | Waterbodies | |
| | | Eastham Town Boundary | |
| | | State Highway | |

Data Source: Town of Eastham Assessors
 Department, Office of Geographic and
 Environmental Information (MassGIS),
 Commonwealth of Massachusetts Executive
 Office of Environmental Affairs
 Massachusetts State Plane - NAD 83m
 For Planning and Analysis Purposes Only
 Prepared: 9/9/09

