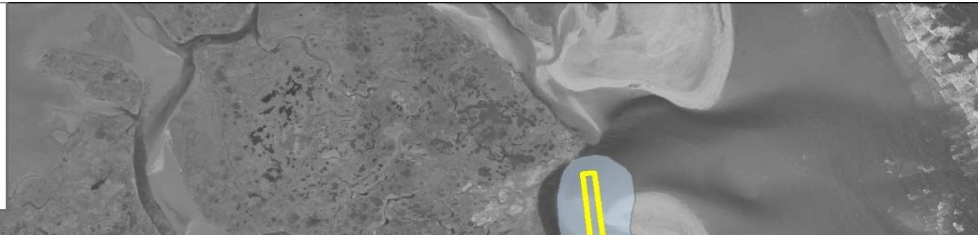
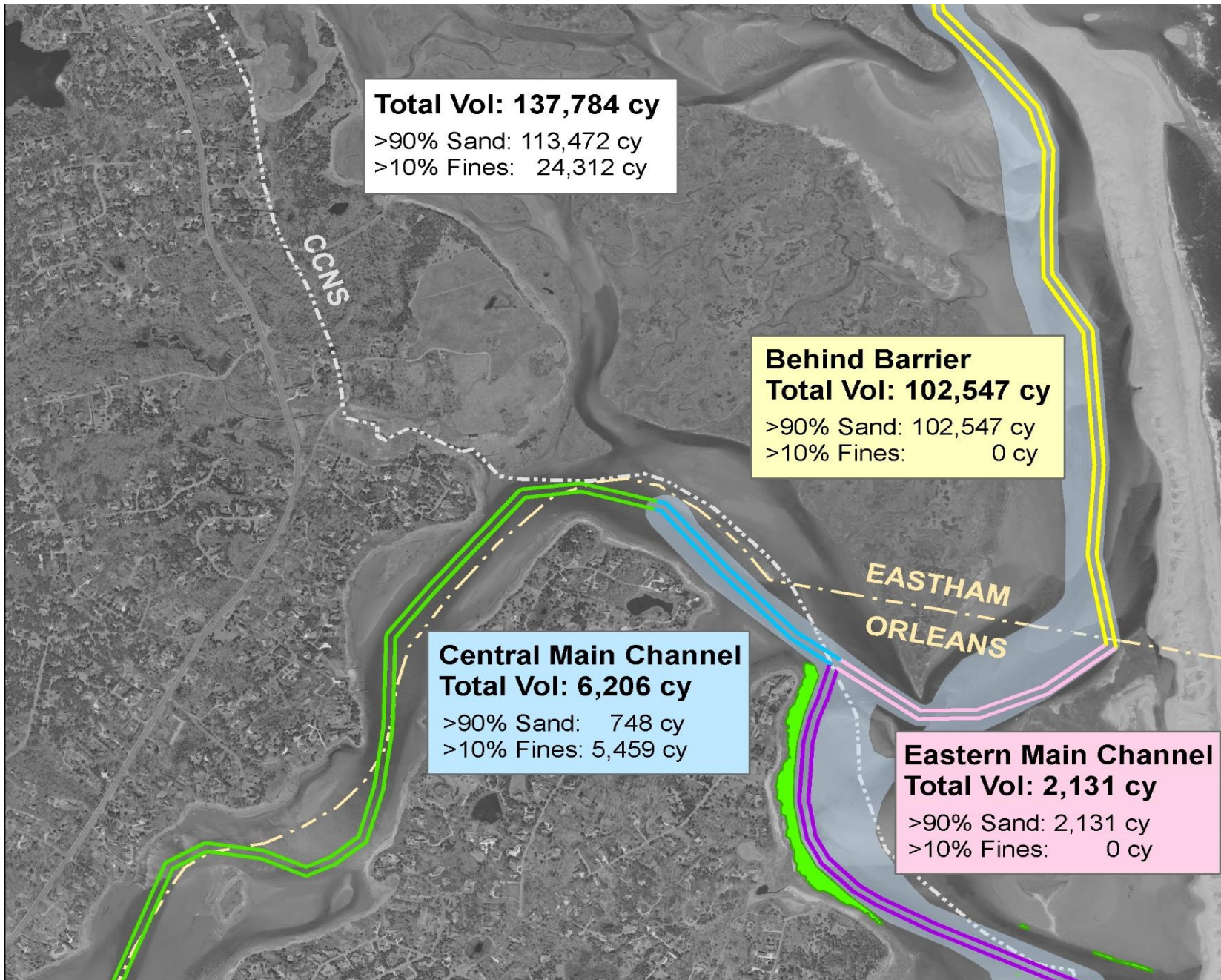


Construction Costs	Channel Areas				
	Town Cove	Central Main Channel	Eastern Main Channel	Priscilla Spur	Behind Barrier*
Hydraulic Dredging Via Barnstable County Dredge					
Estimated Dredge Volume 100 ft Channel (cy)	14,406	8,046	2,660	na	122,164
Estimated Dredge Volume 50 ft Channel (cy)	10,622	6,206	2,131	16,278	102,547
Estimated Dredge Frequency (yrs)	15	10	8	8	50% of total vol annually
Max Pumping Distance to Nauset Dewatering (ft)	18,800	10,700	8,500	8,500	13,600
Number Booster Pumps Required	NA	2	2	2	2 (reduced capacity)
Estimated County Dredge Rate (\$/cy)		\$19	\$19	\$19	\$19
Initial Dredge Cost (100 ft channel)		\$152,874	\$50,540	na	\$2,321,116
Initial Dredge Cost (50 ft channel)		\$117,914	\$40,489	\$309,282	\$1,948,393
Maintenance Cost (100 ft channel behind barrier)					\$1,160,558
Maintenance Cost (50 ft channel behind barrier)					\$974,197
* costs assume northern 3,100 ft of channel behind barrier can be dredged with 2 boosters (reduced capacity) costs do not include additional pipe if needed to supplement Counties existing pipe assumes County aquires a second booser pump					
Private Contractor - Mechanical					
Esitimated Private Contractor Rate (\$/cy)	\$46				
Initial Dredge Cost (100 ft channel)	\$662,676				
Initial Dredge Cost (50 ft channel)	\$488,612				
Orleans Town Dredge (TBD)					
TOTAL Initial Dredge Cost (100 ft channel):					\$3,187,206
TOTAL Initial Dredge Cost (50 ft channel):					\$2,904,690

**Dredge Volume Estimates
Nauset Estuary Channel Reaches
50 ft Wide Channel to -5 MLW
+1 ft Overdepth Dredging**





Total Vol: 137,784 cy

>90% Sand: 113,472 cy
>10% Fines: 24,312 cy

**Behind Barrier
Total Vol: 102,547 cy**

>90% Sand: 102,547 cy
>10% Fines: 0 cy

**Central Main Channel
Total Vol: 6,206 cy**

>90% Sand: 748 cy
>10% Fines: 5,459 cy

**Eastern Main Channel
Total Vol: 2,131 cy**

>90% Sand: 2,131 cy
>10% Fines: 0 cy

